

Application to join NZAFA

Hand this to us or post to: NZAFA membership,
PO Box 25482, Featherston Street, Wellington,
New Zealand, 6011

Academy Galleries
1 Queens Wharf, Wellington
(04) 499 8807
info@nzafa.com
www.nzafa.com
Like us on facebook



New Zealand Academy of Fine Arts Inc.

Mr Mrs Miss Ms Other

First name

Last name

Address

.....

.....Post code

Phone

Email

Email is the main way we communicate with members.

What membership are you applying for?

Artist options:

Practising \$95

Senior (65+) \$75

Student* \$50

Friend options:

Friend \$95

Senior (65+) \$75

Student* \$50

*Students - must be full-time with student ID.

How have you paid your membership fee?

I paid online on date ___/___/___

Please pay to 06 0561 0014541 01 and use
your last name as reference

I paid in person/by phone on date ___/___/___

My cheque to 'Academy of Fine Arts' is
attached*

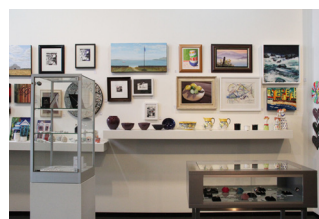
*Mark cheque with 'non-transferable account payee only'

Declaration: I will abide by the Academy's rules and pay the
appropriate membership fee until I resign in writing and
receive the Academy's acknowledgement.

Signed..... Date/...../..... ✂

Need Space to Shine?

Did you know you can rent spaces in the Academy Galleries for your own exhibition or function? The clean lines of our heritage space not only provide the perfect showcase for members' art – it can also be the perfect backdrop for your own event.



Fancy seeing your own art or promotion on these walls? Call us on 04 499 8807, or email us on info@nzafa.com for more details.

Creative atmosphere – flexible space

The Academy Galleries are purpose built – and provide flexible options for entertaining, matched by great lighting and catering facilities. These inviting spaces can be used for anything from corporate meetings, functions, conferences and promotions to special events such as Christmas, birthday and cocktail parties and sit-down dinners.

Calling all artists – and all art lovers and collectors...

Would you like to showcase your work, promote the fine arts and meet others who share your interests in the arts?



We invite you to join us today.

If you love the arts, this is one of the best ways you can support them.

- Open to all artists and art lovers
- Network with practising artists
- Be the first to see new exhibitions
- Submit your work and build profile
- Prime waterfront gallery space

Come and visit us anytime – we're open from 10am to 5pm seven days.

Who are we and what do we do?

We are New Zealand's largest art society, set up over 130 years ago in 1882. As an Academy member you are part of a vibrant art community. Our members come from all over New Zealand – and overseas – and include many of our country's most celebrated artists and collectors, as well as those starting out.

Prime gallery spaces

We're a national body with a stunning waterfront gallery in Wellington where we showcase works by members living both here and overseas. The Academy Galleries are a hard to miss icon right at the heart of the local and international tourist beat.

World class exhibitions

Every year we hold a wide range of world class exhibitions and we have a gallery shop which is open year round – presenting artist members with high profile opportunities to display and sell their works.

Networking and education

We actively foster support for the arts with workshops and forums, by hosting functions where artists, sponsors, collectors and other friends can mingle, by providing meeting spaces – including a members' lounge with an extensive art library. We also welcome artists in residence during exhibitions.

We need your support

But to do this work we need your support. So if you love the arts join us today. Or if you're already a member why not ask a friend to join us too?

What can we offer you?

As an artist or art lover the most important thing we offer you is the chance to come together – to meet, network, inspire and promote the arts, whether it's your own work or the arts in general – and of course lots of opportunities to see and buy interesting new art.

Showcase your work – build your profile

We provide the space and the contacts to enable artists, from painters to potters to photographers and more, to grow and literally show the world what they can do.

Many of our members are collectors or corporates who love the chance to get to know the artists behind the works – and appreciate being able to view and buy new works before others get to see them.

As an Academy member you also get...

- Invitations for you and one other to openings of members' exhibitions. These events are popular, with refreshments served, where you can buy the works before the exhibition opens to the public.
- At least four newsletters a year to keep you in the know about coming exhibitions and other 'must know' art news.
- Generous discounts at leading art supply stores (please ask for our current list).

As an artist member you also get...

Advance notice to submit work for all our exhibitions and better commission rates on sales. You could also be invited to offer your works for sale in Make, our permanent gallery shop – open to the public seven days a week.

How do you join?

That's easy – just fill in the application form on this leaflet and pay your membership fee.

There are different categories of membership – you can be an artist or friend member – with discounts for seniors and students. Fees can be paid online, by credit card over the phone or at the gallery.

Don't be shy...

You don't need to be an established artist or know a lot about the arts to feel at home with us. Our members are artists and art appreciators from all walks - what brings us together is our shared love of the fine arts.

If you'd like to join us as a corporate, business or donor member, please get in touch – we'd be delighted to chat.

Want to know more?

Visit us at the Academy Galleries, or check us out online.

Visit www.nzafa.com for more about what we do, our history and details of exhibitions, hiring space and other services.

- Visit us at 1 Queens Wharf, Wellington
- Call us on (04) 499 8807
- Email info@nzafa.com
- Like us on facebook.

We love visitors – come and see us anytime.

The gallery is open 10am to 5pm seven days.

Current as at January 2017